

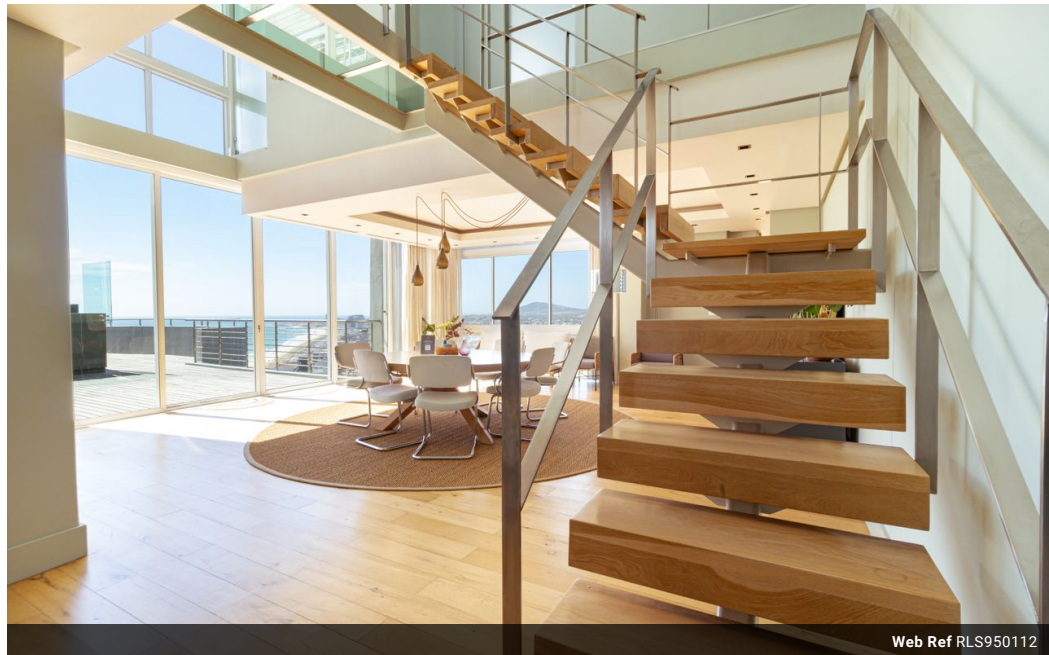


Marlene Picksley
083 746 7860
marlene.picksley@seeff.com

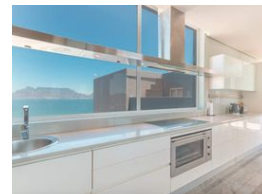
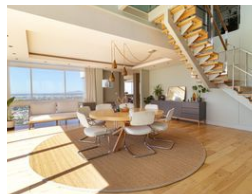
Contact Blouberg

021 5577755

Shop G01 Horizon Bay
4 Blaauwberg Service Road
Table View
Cape Town
7441



Web Ref RLS950112



R12,990,000

3 3.5

Monthly Bond Repayment R134,081.27

Calculated over 20 years at 11% with no deposit.

Transfer Costs R1,326,652.00 **Bond Costs** R99,035.00

These calculations are only a guide. Please ask your conveyancer for exact calculations.

Monthly Levy R13,050 **Monthly Rates** R4,600

OPULENT LIVING - LUXURIOUS PENTHOUSE - BLOUBERG

Indulge in opulent living on the Blouberg Beachfront where every detail, from spacious interiors to lavish finishes, reflects a commitment to unparalleled luxury. Stepping out of your private lift is beyond words, leaving you speechless in the face of such magnificence with mind blowing VIEWS.

Discover elegance with 3 spacious bedrooms, boasting classy, upmarket finishes in each bathroom. Light, bright and white gorgeously designed kitchen with captivating views.

A spiral staircase leading to a top landing with multiple living and dining areas flows out onto an inviting decking area, crowned by a private rooftop pool. This elevated space promises an luxurious escape with a view that defines the pinnacle of relaxation.

3 parking bays and a storeroom for your convenience. 24 hr-manned security

It's not just a home, this...

Features

Interior

Bedrooms	3
Bathrooms	3.5
Kitchens	1
Recep. Rooms	5
Studies	1
Furnished	No

Exterior

Carports / Parkings	3
Security	Yes
Pool	Yes
Views	True

Sizes

Floor Size	365m ²
------------	-------------------

