

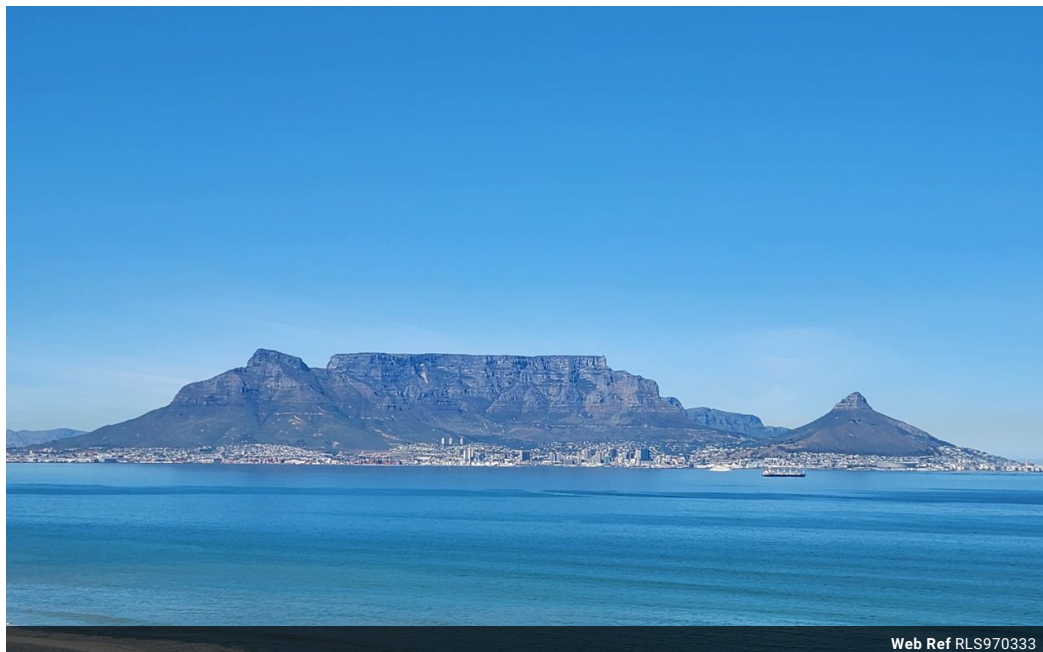


**Marlene Picksley**  
083 746 7860  
marlene.picksley@seeff.com

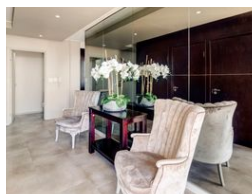
Contact **Blouberg**

**021 5577755**

Shop G01 Horizon Bay  
4 Blaauwberg Service Road  
Table View  
Cape Town  
7441



Web Ref RLS970333



### R11,500,000

3 3.5

**Monthly Bond Repayment** R118,701.67  
Calculated over 20 years at 11% with no deposit.

**Transfer Costs** R1,157,289.00 **Bond Costs** R94,285.00  
These calculations are only a guide. Please ask your conveyancer for exact calculations.

**Monthly Levy** R13,135

### PENTHOUSE BLISS - BLOUBERG

FOREVER VIEWS - KITE BEACH

Own a piece of Paradise which is nestled within walking distance to Blouberg Beachfront, the world renowned Kite Beach destination for kite surfing.

This exceptional penthouse of 250 sq m of luxurious elegance offers 3 spacious bedrooms, 3 en suites with upmarket, modern finishes. Each bedroom has a private balcony overlooking the ocean and sandy white beaches. Your private lift ensures privacy, security and utmost convenience. The wow factor steps in the moment you walk into your penthouse.

Sumptuous open plan dining room/lounge area with an air-conditioner, a delightful kitchen with a centre island for the entertainer. The views are unobstructed with a wrap-around balcony.

An exclusive deck designed for unforgettable evenings, perfect for entertaining, relaxing and capturing sunset...

### Features

#### Interior

|              |     |
|--------------|-----|
| Bedrooms     | 3   |
| Bathrooms    | 3.5 |
| Kitchens     | 1   |
| Recep. Rooms | 2   |
| Furnished    | No  |

#### Exterior

|                     |       |
|---------------------|-------|
| Carports / Parkings | 2     |
| Security            | Yes   |
| Pool                | Yes   |
| Views               | False |

#### Sizes

|            |       |
|------------|-------|
| Floor Size | 250m² |
|------------|-------|

