

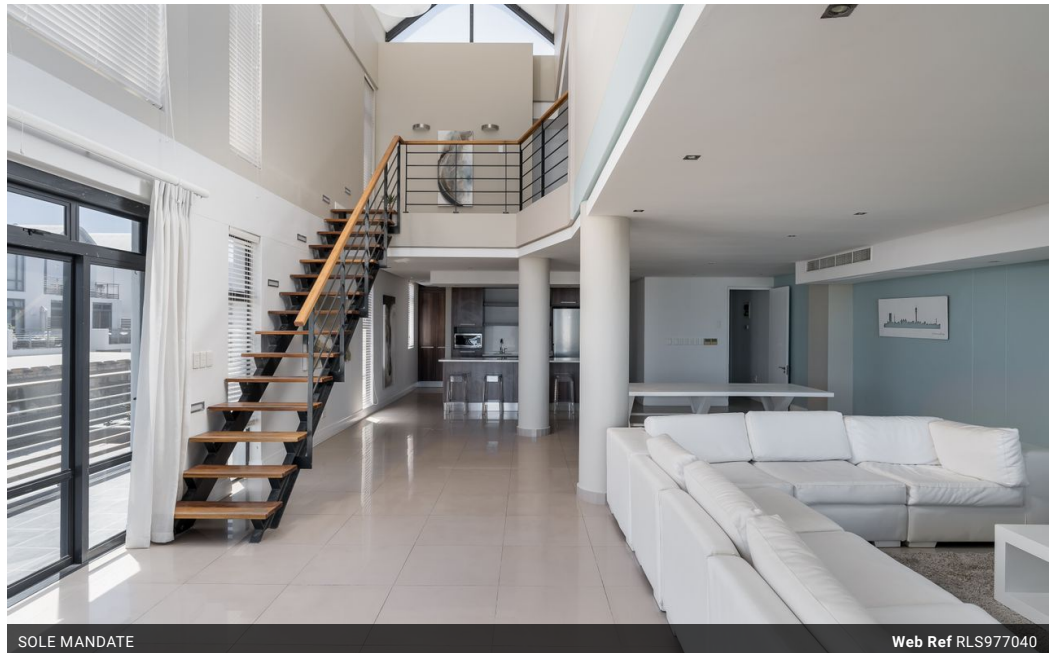


Marlene Picksley
083 746 7860
marlene.picksley@seeff.com

Contact Blouberg

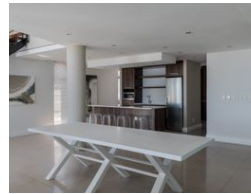
021 5577755

Shop G01 Horizon Bay
4 Blaauwberg Service Road
Table View
Cape Town
7441



SOLE MANDATE

Web Ref RLS977040



R9,950,000

Monthly Bond Repayment R102,702.75
Calculated over 20 years at 11% with no deposit.

Transfer Costs R975,176.00 **Bond Costs** R84,785.00
These calculations are only a guide. Please ask your conveyancer for exact calculations.

3 4 4

Monthly Levy R8,589 **Monthly Rates** R6,620

PENTHOUSE - LUXURIOUS BEACHFRONT WITH A WRAP AROUND BALCONY

Prime location, just a short walk from Blouberg Beach, this luxury penthouse offers panoramic mountain views, ocean views and Robben Island. Situated within vibrant Eden on the Bay complex, providing easy access to shops and restaurants.

Step into coastal elegance with this freshly painted, high-end apartment, perfectly positioned right on the beachfront. Enjoy the sound of the ocean from your wrap around balcony, designed for seamless indoor/outdoor living.

This stunning 3 bedroomed penthouse comprises 3 generously sized bedrooms, each with its own en-suite bathroom. The master suite is a private retreat, complete with its own ocean view balcony, providing a serene sanctuary by the sea.

The high ceilings, expansive windows and upmarket finishes create a bright and sophisticated atmosphere. Spacious open plan lounge and...

Features

Interior		Exterior		Sizes	
Bedrooms	3	Garages	4	Floor Size	318m ²
Bathrooms	4	Carports / Parkings	6		
Kitchens	1	Security	No		
Recep. Rooms	2	Pool	No		
Furnished	No	Views	True		

Extras

24 Hour Access Air Conditioner Balcony Built in Wardrobes Centre Island Dishwasher
Connection Electric Gate Entrance Hall Extractor Fan Lifts Open Plan Sliding Doors Tumble
Dryer Washing Machine Connection

