

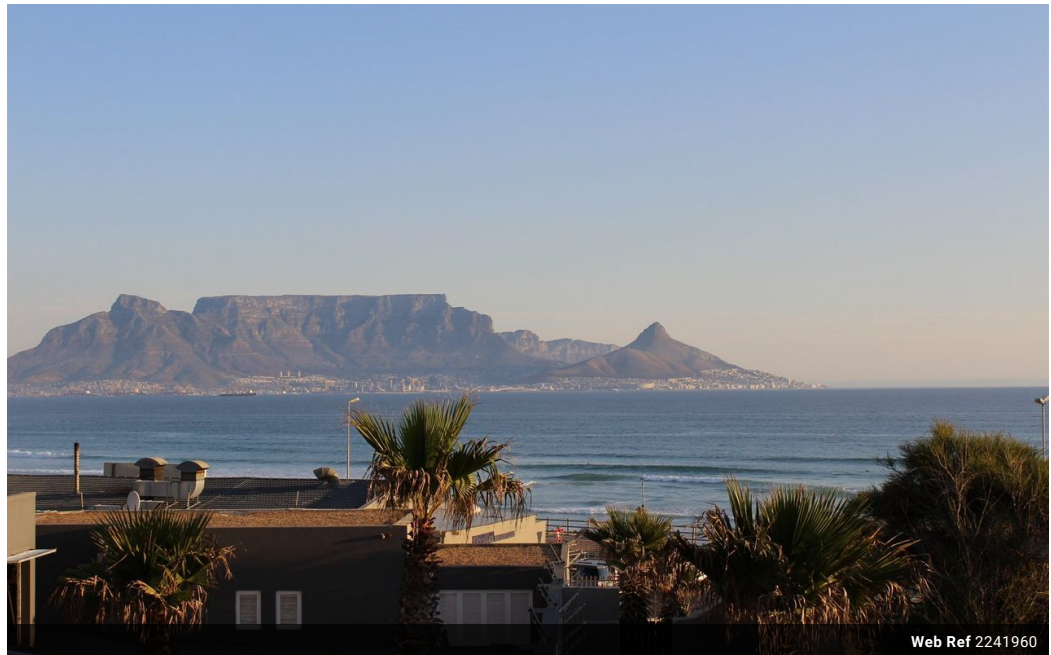


**Marlene Picksley**  
083 746 7860  
marlene.picksley@seeff.com

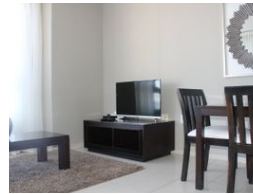
Contact Blouberg

021 5577755

Shop G01 Horizon Bay  
4 Blaauwberg Service Road  
Table View  
Cape Town  
7441



Web Ref 2241960



### R3,473,047

2 1

**Monthly Bond Repayment** R35,848.39  
Calculated over 20 years at 11% with no deposit.

**Transfer Costs** R218,749.17 **Bond Costs** R47,840.00  
These calculations are only a guide. Please ask your conveyancer for exact calculations.

**Monthly Levy** R3,704 **Monthly Rates** R1,072

### ELEGANTLY DESIGNED BEACHFRONT APARTMENT

This delightful corner apartment boasts 2 bedrooms, 1 full bathroom, well fitted modern kitchen and an open plan living room with large windows that boasts spectacular views of the Ocean, Table Mountain and Robben Island. Fully furnished and equipped, with luxury finishes throughout.

Situated in a prestigious complex with 24hr security guarded access control, indoor and outdoor communal pools, gymnasium, squash court, self-service laundry, communal braai / entertainment area. A pathway leads to the popular Bloubergstrand beachfront. Within close distance of trendy restaurants and amenities.  
NO TRANSFER DUTIES.

### Features

#### Interior

Bedrooms	2
Bathrooms	1
Kitchens	1
Recep. Rooms	4
Furnished	No

#### Exterior

Carports / Parkings	2
Security	Yes
Pool	Yes
Views	False

#### Sizes

Floor Size	63m <sup>2</sup>
Land Size	6,226m <sup>2</sup>

