



Marlene Picksley
083 746 7860
marlene.picksley@seeff.com

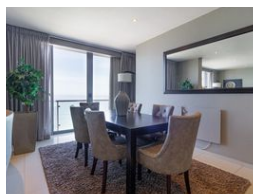
Contact **Blouberg**

021 5577755

Shop G01 Horizon Bay
4 Blaauwberg Service Road
Table View
Cape Town
7441



Web Ref RLS945291



R6,393,284

🛏 2 🚿 2

Monthly Bond Repayment R65,990.74

Calculated over 20 years at 11% with no deposit.

Transfer Costs R567,027.24 **Bond Costs** R70,535.00

These calculations are only a guide. Please ask your conveyancer for exact calculations.

Monthly Levy R6,700 **Monthly Rates** R1,930

VIEWS AND MORE VIEWS FOREVER - APARTMENT/PENTHOUSE LIVING - BLOUBERGSTRAND

PRICE INCLUDES TRANSFER DUTIES, FURNITURE AND APPLIANCES

This premier investment opportunity on the idyllic Blouberg Beachfront, is a top kiteboarding location in the world.. The apartments offer a selection of one or two bedrooms, with the best views of Table Mountain, Robben Island and iconic views of Cape Town,

This fully furnished and equipped executive apartment has been specifically designed to maximise the sea views, outdoor lifestyle and subtropical climate, and offers exquisite views of Table Mountain, the Atlantic Ocean and Robben Island. There are 2 spacious bedrooms and 2 modern bathrooms, 1 full bathroom, plus 1 main en-suite, The reception rooms are open plan with a well-appointed, modern fitted kitchen with granite working surfaces. Plumbing for all appliances.

Situated in a prestigious complex with 24hr...

Features

Interior

Bedrooms	2
Bathrooms	2
Kitchens	1
Recep. Rooms	2
Furnished	No

Exterior

Carports / Parkings	1
Security	Yes
Pool	Yes
Views	False

Sizes

Floor Size	115m ²
------------	-------------------

