

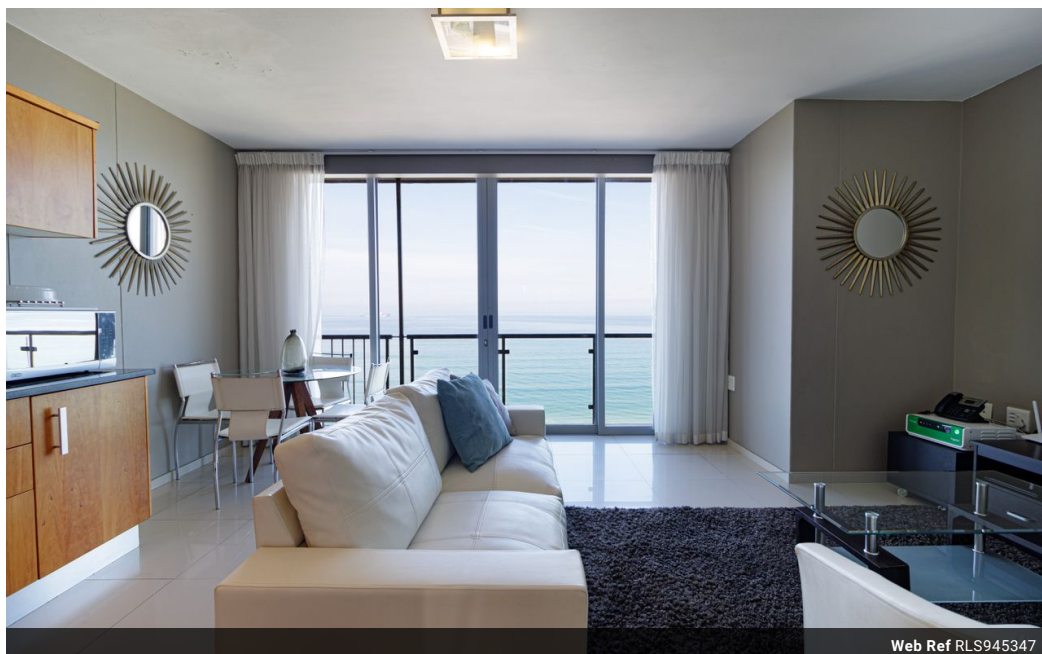


Marlene Picksley
083 746 7860
marlene.picksley@seeff.com

Contact Blouberg

021 5577755

Shop G01 Horizon Bay
4 Blaauwberg Service Road
Table View
Cape Town
7441



Web Ref RLS945347



R3,792,150

🛏 2 🚿 2

Monthly Bond Repayment R39,142.13

Calculated over 20 years at 11% with no deposit.

Transfer Costs R256,018.50 **Bond Costs** R49,725.00

These calculations are only a guide. Please ask your conveyancer for exact calculations.

Monthly Levy R3,991 **Monthly Rates** R1,083

VIEWS AND LOCATION IS PRIME - APARTMENT LIVING AT IT'S BEST - BLOUBERGSTRAND

PRICE INCLUDES TRANSFER DUTIES, FURNITURE AND APPLIANCES

This premier investment opportunity on the idyllic Blouberg Beachfront, is a top kiteboarding location in the world.. The apartments offer a selection of one or two bedrooms, with the best views of Table Mountain, Robben Island and iconic views of Cape Town.

Modern and secure apartments, 2 bedrooms and 2 bathrooms, ideal investment, situated on 10th floor with forever views. Open plan kitchen with granite tops and all appliances. Open plan lounge/dining with views.

Situated in a prestigious complex with 24hr concierge and security guarded access control, indoor and outdoor communal pools, gymnasium, squash court, self-service laundry, communal braai / entertainment area. A pathway leads to the popular Bloubergstrand beachfront.

Within close distance of trendy...

Features

Interior

Bedrooms	2
Bathrooms	2
Kitchens	1
Recep. Rooms	2
Furnished	No

Exterior

Carports / Parkings	1
Security	Yes
Pool	Yes
Views	False

Sizes

Floor Size	68m²
------------	------

