

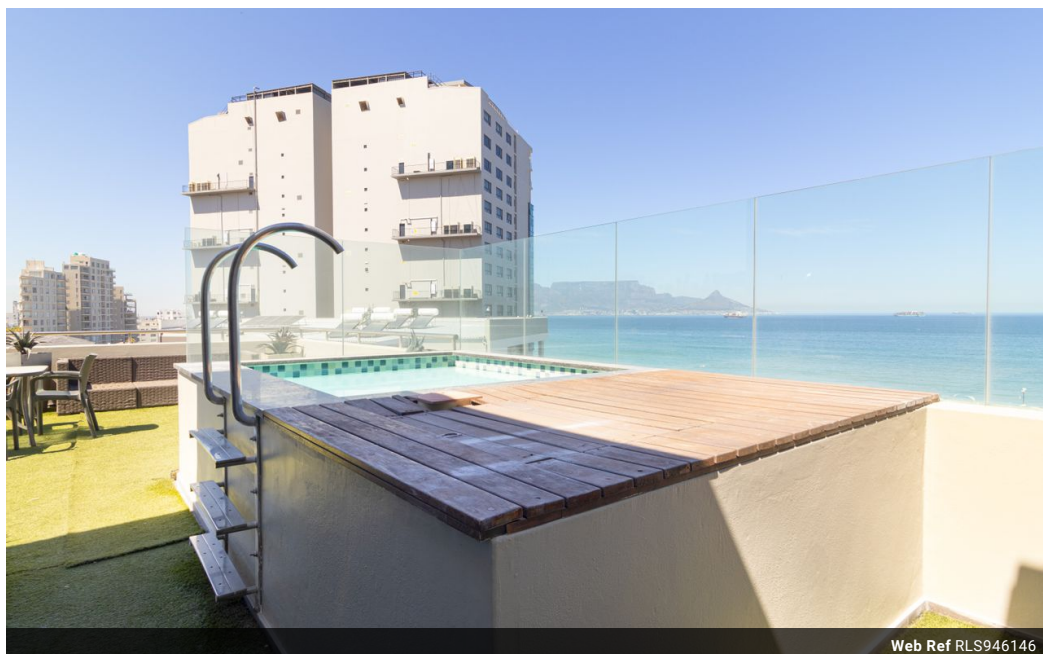


Marlene Picksley
083 746 7860
marlene.picksley@seeff.com

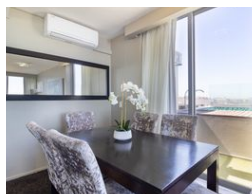
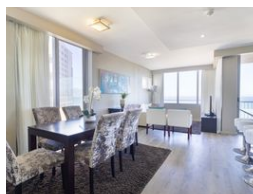
Contact Blouberg

021 5577755

Shop G01 Horizon Bay
4 Blaauwberg Service Road
Table View
Cape Town
7441



Web Ref RLS946146



R7,483,176

2 2

Monthly Bond Repayment R77,240.47
Calculated over 20 years at 11% with no deposit.

Transfer Costs R692,377.36 **Bond Costs** R75,285.00
These calculations are only a guide. Please ask your conveyancer for exact calculations.

Monthly Levy R5,180 **Monthly Rates** R3,700

A LITTLE PIECE OF BLISS - FULL VIEWS

Infinity Apartments, Blouberg Beachfront
LIFESTYLE LIVING
VAT INCLUSIVE AND ALL APPLIANCES AND FURNITURE INCLUDED

Nestled along the beachfront of Blouberg, resonating perfection along the white beaches and spectacular views of the Iconic Table Mountain and Robben Eiland. This is your ideal investment destination.

The apartment offers 2 luxury bedrooms, 2 bathrooms with upmarket finishes, 1 main en-suite. Lovely open plan lounge and dining room leading onto a large terrace/balcony with your own private swimming pool with panoramic views.

The luxurious apartments offer a 24-hr manned security and concierge service for your convenience. A rental pool facility to manage your investment returns effortlessly.

This is an amazing lifestyle opportunity, indoor gym, indoor pool, outside braai facilities with large outdoor pool with...

Features

| Interior | | Exterior | | Sizes | |
|--------------|----|---------------------|-------|------------|-------------------|
| Bedrooms | 2 | Carports / Parkings | 1 | Floor Size | 145m ² |
| Bathrooms | 2 | Security | Yes | | |
| Kitchens | 1 | Pool | Yes | | |
| Recep. Rooms | 2 | Views | False | | |
| Furnished | No | | | | |

