



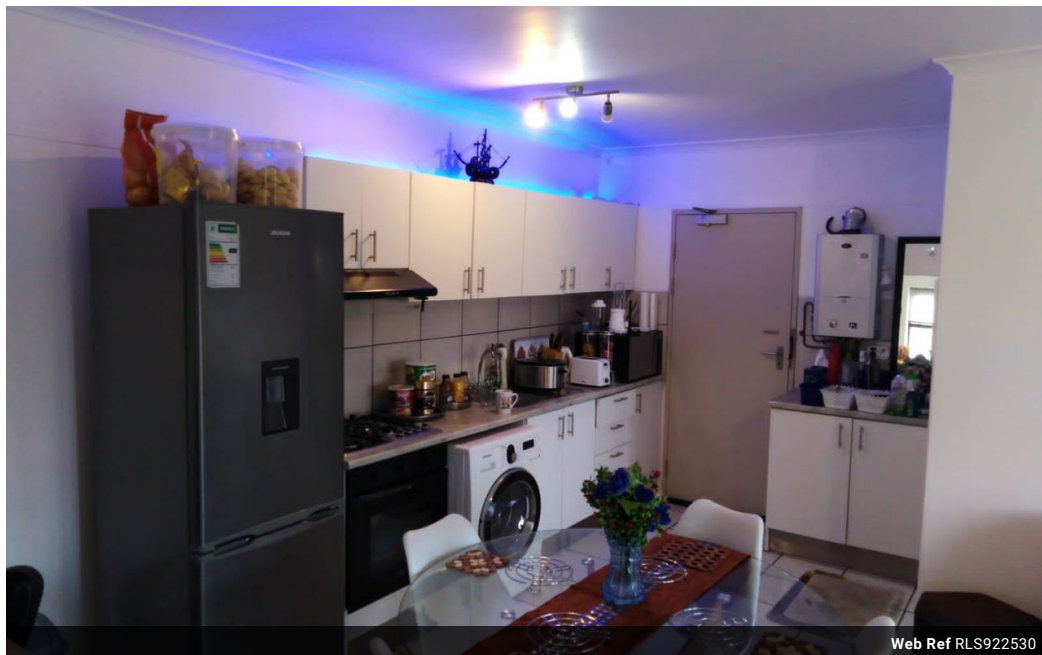
**Ettiene Hoon**  
081 395 7743  
ettiene.hoon@seeff.com

Contact Blouberg

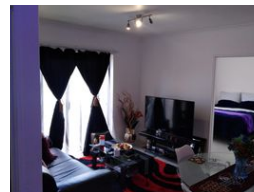
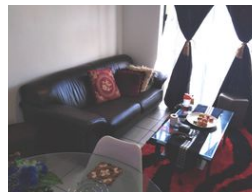
021 5577755

Shop G01 Horizon Bay  
4 Blaauwberg Service Road  
Table View  
Cape Town  
7441

## 2 Bedroom Apartment For Sale in Flamingo Vlei



Web Ref RLS922530



### R960,000

2 1

**Monthly Bond Repayment** R9,909.01  
Calculated over 20 years at 11% with no deposit.

**Transfer Costs** R30,412.00 **Bond Costs** R23,335.00

These calculations are only a guide. Please ask your conveyancer for exact calculations.

**Monthly Levy** R1,059 **Monthly Rates** R549

### Two bedroom apartment, Table View

Seeff Blouberg is proud to present this two-bedroom apartment to the discerning market. Located in table View, close to shops and arterials, this apartment offers exceptional value and above average accommodation.

The clever design of this apartment, incorporates a mix of integrated open spaces, featuring an open plan kitchen, lounge and dining area, which leads out through patio doors, onto a balcony that extends to almost the full length of the apartment.

The kitchen is well equipped with a stove, as well as an under counter oven, and offers adequate space.

Vehicle parking is provided by one allocated parking bays, under cover, behind security gates.

This apartment is a rare opportunity in the price range, and will suit a young couple, or small family starting out. Home buyers seeking to scale down and looking for high...

### Features

#### Interior

Bedrooms	2
Bathrooms	1
Kitchens	1
Recep. Rooms	1
Furnished	No

#### Exterior

Carports / Parkings	1
Security	No
Pool	No
Views	False

#### Sizes

Floor Size	51m²
------------	------

#### Extras

Granite Tops Security Gate Built in Wardrobes TV Port Curtain Rails Dishwasher Connection  
Electric Fencing Oven And Hob Tiled Floors Washing Machine Connection Electric Gate  
Garbage Disposal

