

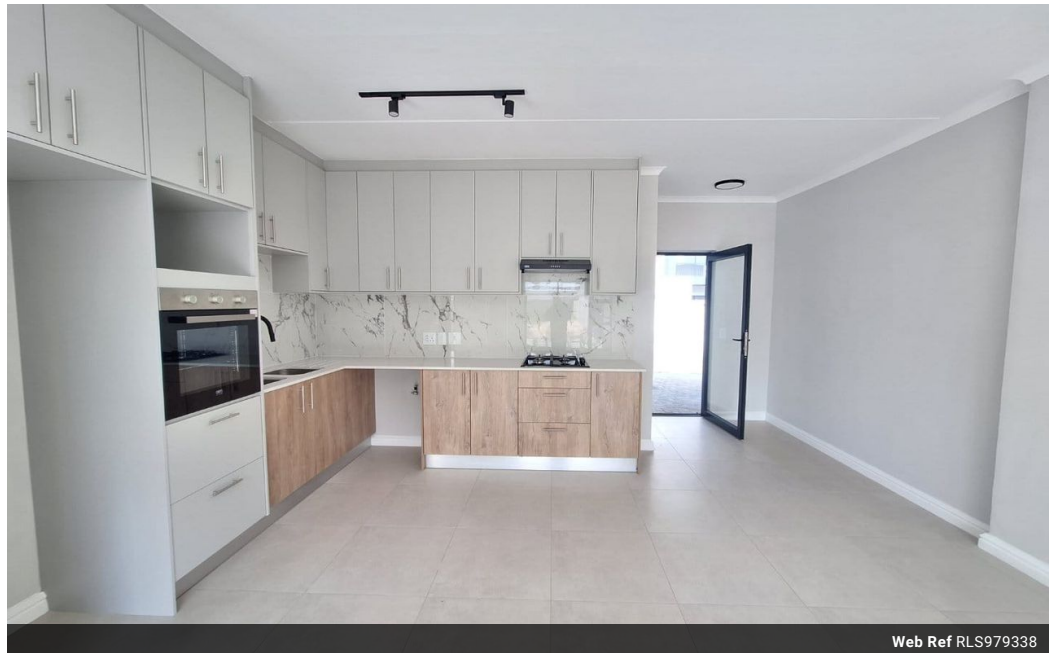


Gildo Engelke
 Candidate Property Practitioner
 Registered with PPRRA
 (FFC 202 374 265 3)
 082 874 9899
 gildo.engelke@seeff.com

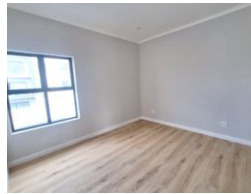
Contact Blouberg

021 5577755

Shop G01 Horizon Bay
 4 Blaauwberg Service Road
 Table View
 Cape Town
 7441



Web Ref RLS979338



R1,849,000

2 1

Monthly Bond Repayment R19,085.16
 Calculated over 20 years at 11% with no deposit.

Transfer Costs R66,146.00 **Bond Costs** R32,760.00

These calculations are only a guide. Please ask your conveyancer for exact calculations.

Modern 2-Bedroom Apartments Now Selling in Secure Knightswood Estate

Prices from R1 849 000 – R2 099 000 | Sizes from 87m² to 94m²
 Under Construction – Move In Estimated August 2025

Knightswood Estate offers an exclusive opportunity to own a beautifully designed home in a secure, modern development. With only 63 residences available, this sought-after estate combines contemporary living with convenience and peace of mind in the heart of Sandown.

Why Choose Knightswood Estate?

- Limited Edition Living
- 63 luxury apartments and duplexes
 - Only 6 exclusive 2-bedroom, 1-bathroom apartments available

Modern Finishes, Thoughtful Design

- Spacious open-plan layouts
- Laminated bedroom flooring for a stylish touch
- Designer kitchens with quartz countertops and sleek backsplashes
- Premium bathrooms featuring high-end sanitaryware

Features

Interior		Exterior		Sizes	
Bedrooms	2	Carports / Parkings	1	Floor Size	87m ²
Bathrooms	1	Security	Yes	Land Size	87m ²
Kitchens	1	Pool	No		
Recep. Rooms	2	Views	False		
Furnished	No				

Extras

24 Hour Access 24 Hour Response Balcony Built in Wardrobes Curtain Rails Dishwasher Connection Garden Gas Hob Laminated Floors Open Plan Oven & Hob Sliding Doors Tiled Floors Washing Machine Connection