



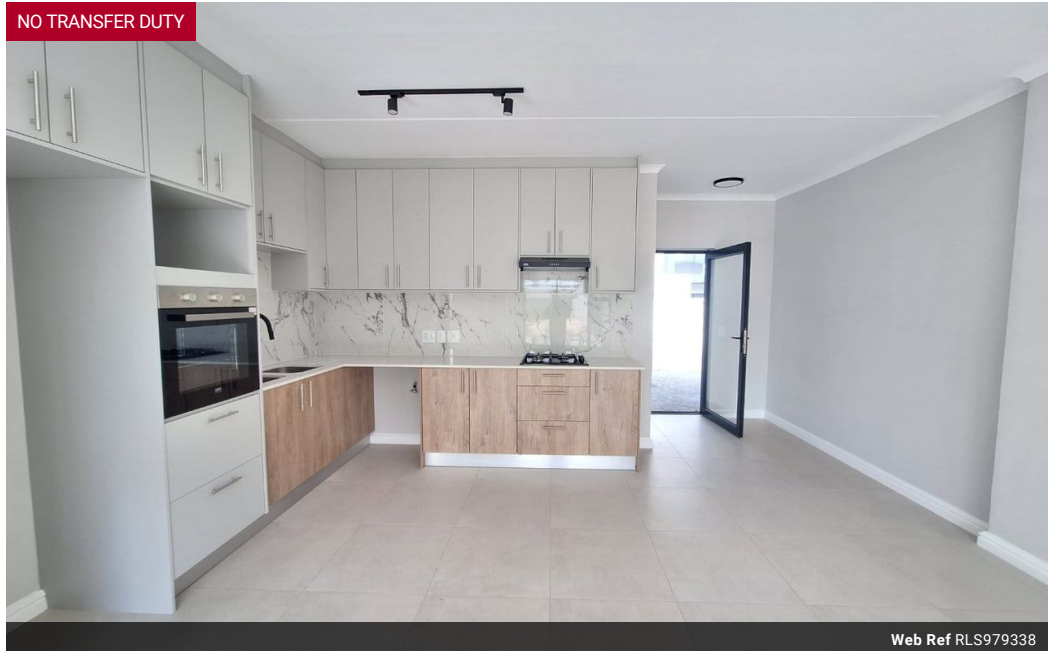
**Gildo Engelke**  
 Candidate Property Practitioner  
 Registered with PPRRA  
 (FFC 202 374 265 3)  
 082 874 9899  
 gildo.engelke@seeff.com

Contact Blouberg

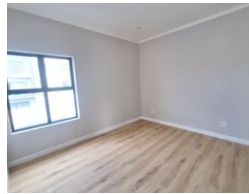
021 5577755

Shop G01 Horizon Bay  
 4 Blaauwberg Service Road  
 Table View  
 Cape Town  
 7441

NO TRANSFER DUTY



Web Ref RLS979338



**R1,849,000**

2 1

**Monthly Bond Repayment** R19,085.16  
 Calculated over 20 years at 11% with no deposit.

**Transfer Costs** R66,146.00 **Bond Costs** R32,760.00

These calculations are only a guide. Please ask your conveyancer for exact calculations.

### Modern 2-Bedroom Apartments Now Selling in Secure Knightswood Estate

Prices from R1 849 000 – R2 099 000 | Sizes from 87m<sup>2</sup> to 94m<sup>2</sup>  
 Under Construction – Move In Estimated August 2025

Knightswood Estate offers an exclusive opportunity to own a beautifully designed home in a secure, modern development. With only 63 residences available, this sought-after estate combines contemporary living with convenience and peace of mind in the heart of Sandown.

#### Why Choose Knightswood Estate?

- Limited Edition Living
- 63 luxury apartments and duplexes
  - Only 6 exclusive 2-bedroom, 1-bathroom apartments available

#### Modern Finishes, Thoughtful Design

- Spacious open-plan layouts
- Laminated bedroom flooring for a stylish touch
- Designer kitchens with quartz countertops and sleek backsplashes
- Premium bathrooms featuring high-end sanitaryware

### Features

#### Interior

Bedrooms	2
Bathrooms	1
Kitchens	1
Recep. Rooms	2
Furnished	No

#### Exterior

Carports / Parkings	1
Security	Yes
Pool	No
Views	False

#### Sizes

Floor Size	87m <sup>2</sup>
Land Size	87m <sup>2</sup>

#### Extras

24 Hour Access 24 Hour Response Balcony Built in Wardrobes Curtain Rails Dishwasher Connection Garden Gas Hob Laminated Floors Open Plan Oven & Hob Sliding Doors Tiled Floors Washing Machine Connection