



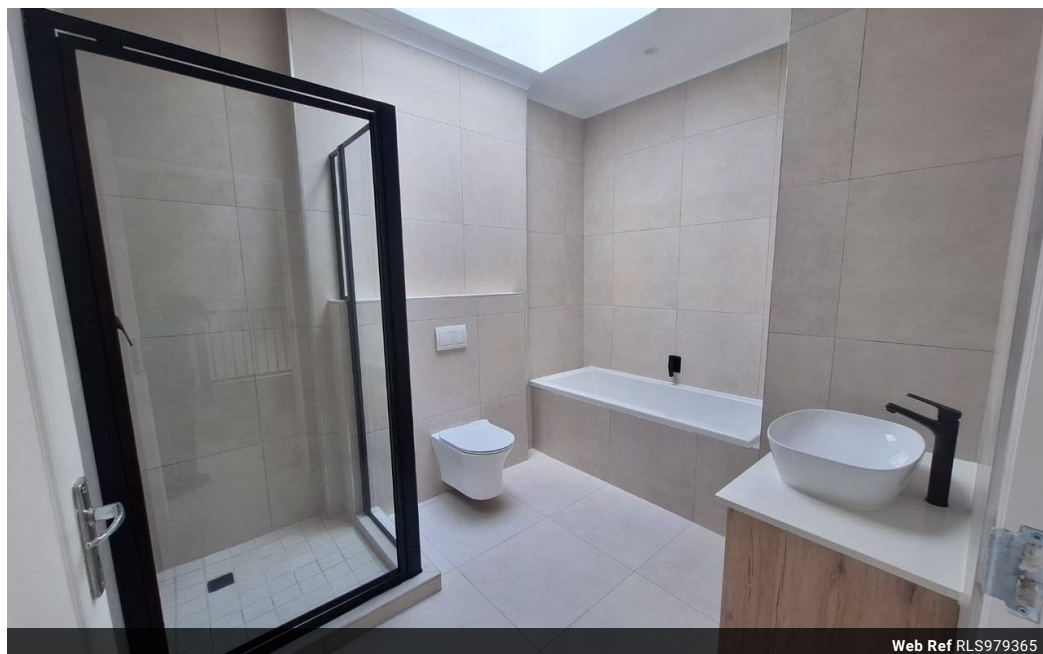
**Gildo Engelke**

Candidate Property Practitioner  
Registered with PPRA  
(FFC 202 374 265 3)  
082 874 9899  
gildo.engelke@seeff.com

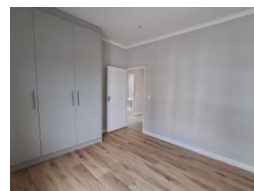
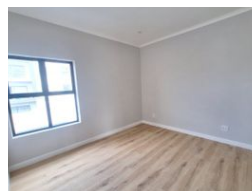
Contact Blouberg

021 5577755

Shop G01 Horizon Bay  
4 Blaauwberg Service Road  
Table View  
Cape Town  
7441



Web Ref RLS979365



**R2,199,000**

3 2

**Monthly Bond Repayment** R22,697.82

Calculated over 20 years at 11% with no deposit.

**Transfer Costs** R89,887.00 **Bond Costs** R34,625.00

These calculations are only a guide. Please ask your conveyancer for exact calculations.

### Modern 3-Bedroom Apartments – Now Selling in Secure Knightswood Estate

Prices from R2 199 000 – R2 299 000 | Sizes from 113m² to 118m²  
Under Construction – Move-In Estimated August 2025

Knightswood Estate presents an exclusive opportunity to own a beautifully designed home in a secure, modern development. With only 63 residences available, this sought-after estate blends contemporary living with convenience and peace of mind in the heart of Sandown.

#### Why Choose Knightswood Estate?

##### Limited Edition Living

- 63 luxury apartments and duplexes
- 3-bedroom, 2-bathroom apartments on the 1st, 2nd, and 3rd floors with modern designs

##### Modern Finishes, Thoughtful Design

- Spacious open-plan layouts
- Stylish laminated bedroom flooring
- Designer kitchens with quartz countertops and sleek backsplashes
- Premium bathrooms featuring high-end sanitary ware

### Features

#### Interior

Bedrooms	3
Bathrooms	2
Kitchens	1
Recep. Rooms	2
Studies	1
Furnished	No

#### Exterior

Carports / Parkings	1
Security	Yes
Pool	No
Views	False

#### Sizes

Floor Size	118m²
Land Size	118m²

#### Extras

24 Hour Access 24 Hour Response Built in Wardrobes Centre Island Curtain Rails Dishwasher Connection Electric Garage Eye Level Oven Fibre Garden Gas Hob Laminated Floors Open Plan Oven & Hob Patio Sliding Doors Storage Tiled Floors Washing Machine Connection