



Gildo Engelke
 Candidate Property Practitioner
 Registered with PPRRA (FFC 202 374 265 3)
 082 874 9899
 gildo.engelke@seeff.com

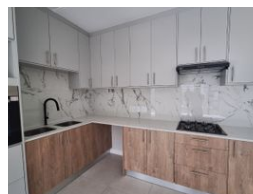
Contact Blouberg

021 5577755

Shop G01 Horizon Bay
 4 Blaauwberg Service Road
 Table View
 Cape Town
 7441



Web Ref RLS979357



R2,899,000

Monthly Bond Repayment R29,923.14
 Calculated over 20 years at 11% with no deposit.

Transfer Costs R151,975.00 **Bond Costs** R42,185.00
 These calculations are only a guide. Please ask your conveyancer for exact calculations.

3 2.5 2

Modern 3-Bedroom, 2.5-Bathroom Ground Floor Townhouse/Duplex – Now Selling in Secure Knightswood Est

Prices from R2 899 000 | Size 163m²
 Under Construction – Move-In Estimated August 2025

Knightswood Estate presents an exclusive opportunity to own a beautifully designed ground-floor townhouse/duplex in a secure, modern development. With only 63 residences available, this sought-after estate blends contemporary living with convenience and peace of mind in the heart of Sandown.

- Why Choose Knightswood Estate?**
 Limited Edition Living
 • 63 luxury apartments and duplexes
 • 3-bedroom, 2.5-bathroom ground-floor townhouse/duplex with modern designs

- Modern Finishes, Thoughtful Design**
 • Spacious open-plan layouts
 • Stylish laminated bedroom flooring
 • Designer kitchens with quartz countertops and sleek backsplashes
 • Premium bathrooms featuring high-end fixtures

Features

Interior		Exterior		Sizes	
Bedrooms	3	Garages	2	Floor Size	163m ²
Bathrooms	2.5	Carports / Parkings	2	Land Size	163m ²
Kitchens	1	Security	Yes		
Recep. Rooms	2	Pool	No		
Studies	1	Views	False		
Furnished	No				

- Extras**
 24 Hour Access 24 Hour Response Balcony Built in Wardrobes Centre Island Curtain Rails
 Dishwasher Connection Driveway Eye Level Oven Fibre Garden Gas Hob Guest Toilet
 Laminated Floors Open Plan Oven & Hob Piped Gas Sliding Doors Storage Tiled Floors
 Washing Machine Connection