

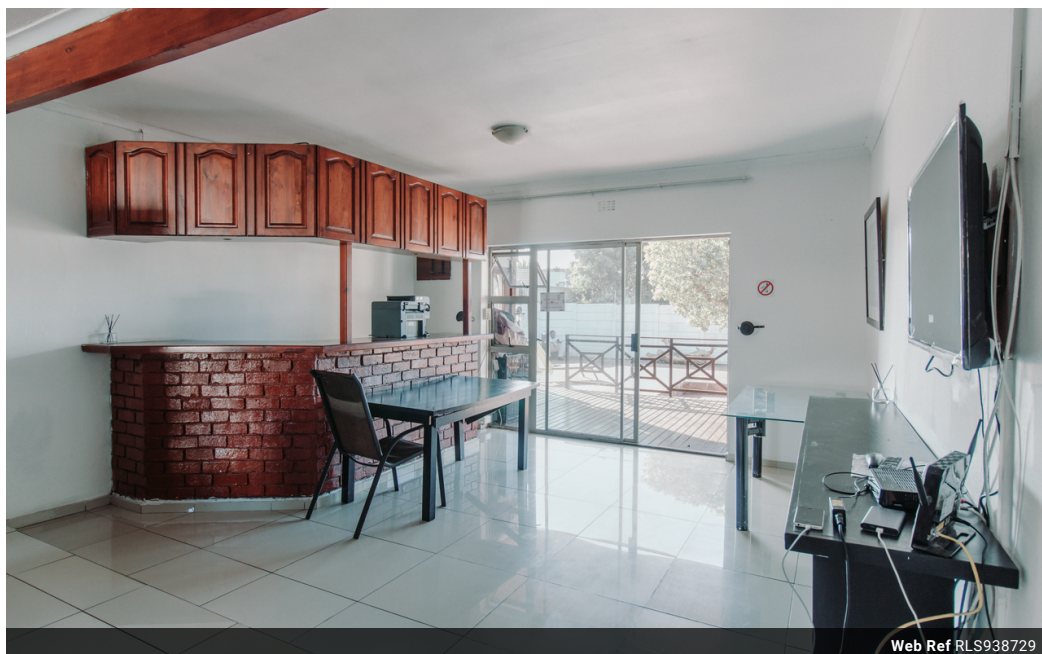


Marlene Picksley
083 746 7860
marlene.picksley@seeff.com

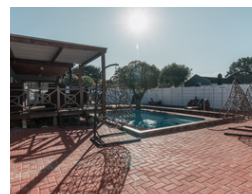
Contact Blouberg

021 5577755

Shop G01 Horizon Bay
4 Blaauwberg Service Road
Table View
Cape Town
7441



Web Ref RLS938729



R3,399,999

7
 7
 1

Monthly Bond Repayment R35,094.40
Calculated over 20 years at 11% with no deposit.

Transfer Costs R208,546.89 **Bond Costs** R45,955.00
These calculations are only a guide. Please ask your conveyancer for exact calculations.

Monthly Rates R534

LARGE FAMILY HOME FOR DUAL LIVING OR INVESTOR'S PARADISE - POTENTIAL FOR AIR BNB, CRECHE TABLE VIEW

This 7 bedroomed home with 7 en-suites, with upmarket finishes is situated in a well known street in West Riding, Table View.

The property boasts loads of potential for an air bnb, a creche or dual living for the larger family.

Brand new kitchen installed with plenty cupboards, leading to lounge and dining room with porcelain tiles throughout. Lovely undercover patio with wooden decking leading to sparkling pool. Paved low maintenance garden.

The bedrooms are equipped with TV's and Air-Conditioning.

Plenty secure parking behind electric gates plus outside parking. Bonus: JoJo tank, borehole and electric fencing.

Make the call today for a private viewing

Features

Pets Allowed		Interior		Exterior		Sizes	
Yes		Bedrooms	7	Garages	1	Land Size	704m ²
		Bathrooms	7	Carports / Parkings	6		
		Kitchens	1	Security	Yes		
		Recep. Rooms	2	Pool	Yes		
		Furnished	No	Views	False		

