

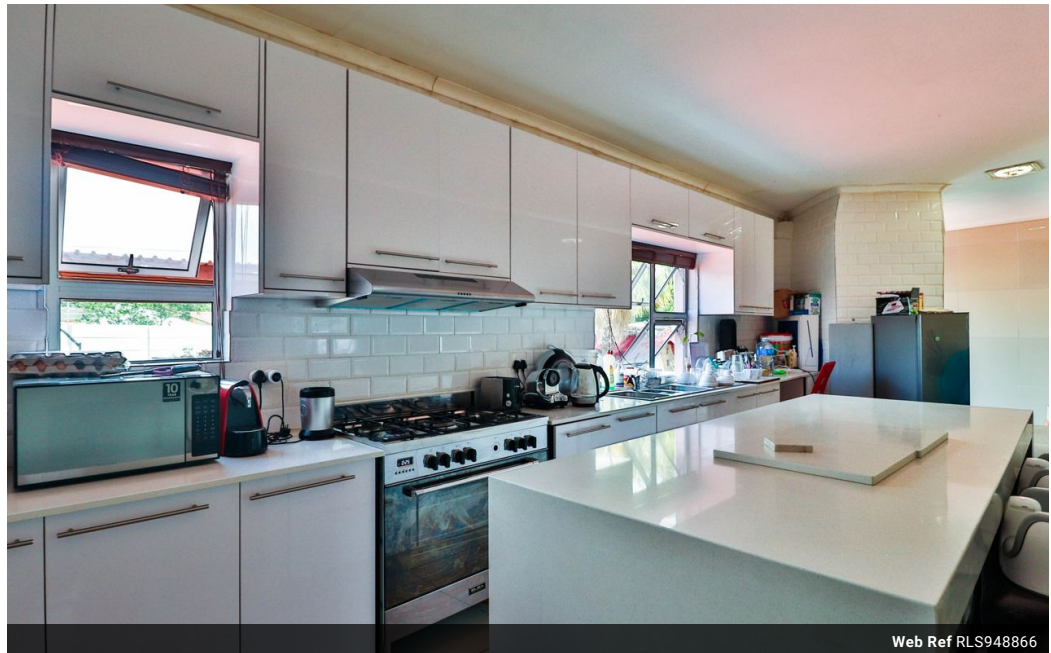


Marlene Picksley
083 746 7860
marlene.picksley@seeff.com

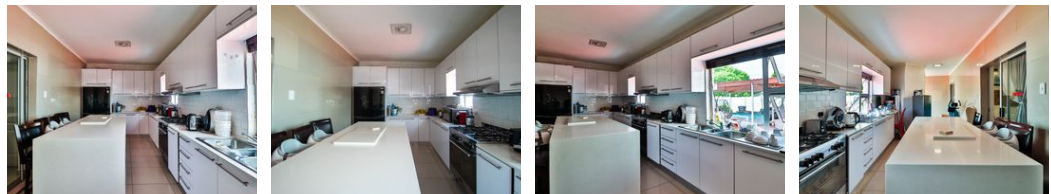
Contact Blouberg

021 5577755

Shop G01 Horizon Bay
4 Blaauwberg Service Road
Table View
Cape Town
7441



Web Ref RLS948866



R3,699,999

Monthly Bond Repayment R38,190.96
Calculated over 20 years at 11% with no deposit.

Transfer Costs R245,881.89 **Bond Costs** R49,725.00
These calculations are only a guide. Please ask your conveyancer for exact calculations.

Monthly Rates R1,009

5 5 2

FAMILY AND WORK FROM HOME OPPORTUNITY - A-GO-GO -

Ideal for the larger family or for a work from home executive. You can run your business and home from one property. This home comprises of one large boardroom which is so versatile with many options for a creche, doctor's room, library, etc and a reception area for meeting your clientele.

The property boasts 5 en suite bedrooms with air conditioning, fireplace in lounge and kitchen with gas stove.

BONUS: an inverter, well point, electric fence and cameras.

Double garage, plus tandem garage plus tandem carport. Lovely lapa and swimming pool.

Close to all amenities and MyCiti bus routes. This home has loads of potential. Call today, gone tomorrow.

Features

Pets Allowed	Yes				
Interior		Exterior		Sizes	
Bedrooms	5	Garages	2	Floor Size	196m ²
Bathrooms	5	Carports / Parkings	4	Land Size	704m ²
Kitchens	1	Security	Yes		
Recep. Rooms	1	Pool	Yes		
Studies	1	Views	False		
Furnished	No				

