

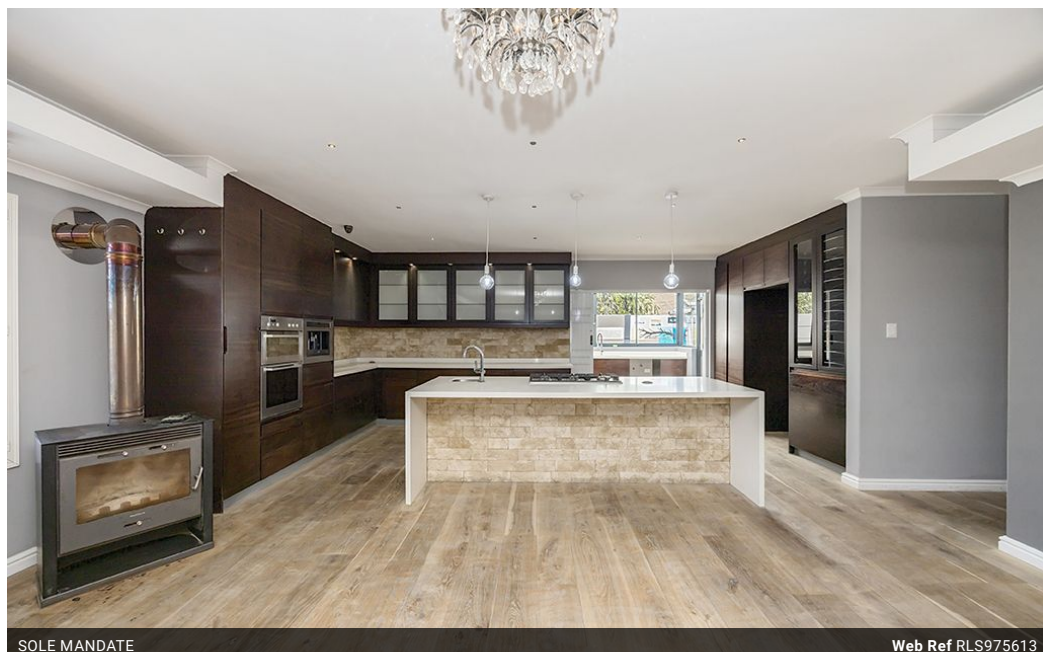


Debi Todt
082 932 8714
debi.todt@seeff.com

Contact Blouberg

021 5577755

Shop G01 Horizon Bay
4 Blaauwberg Service Road
Table View
Cape Town
7441



SOLE MANDATE

Web Ref RLS975613



R5,850,000

🛏 4 🚿 3 🚗 2

Monthly Bond Repayment R60,383.02

Calculated over 20 years at 11% with no deposit.

Transfer Costs R501,307.00 **Bond Costs** R65,785.00

These calculations are only a guide. Please ask your conveyancer for exact calculations.

Monthly Rates R1,595

Large family home, 4 bedrooms and virtually Off-Grid

The home is situated on an exceptionally large erf of 1,116m² in a quiet road, close to all amenities, and is the perfect home for the large growing family who require plenty of space for children to run and play.

On entering the home, you are immediately impressed with the spacious living area covered with beautiful Oggie premium hardwood flooring, which in turn flows out through stacking doors to a U-shaped courtyard leading to garden and pool area. Downlights, chandelier, air conditioner, wood burning fireplace and American Shutters complete this beautiful space. The kitchen is a delight for home chefs, complete with large 5 burner gas hob, built in eye level oven, microwave and coffee machine, plus an extensive island with pop up electrical point, ample beautiful cabinetry and Caesar stone counter tops. Not to mention space...

Features

Pets Allowed		Yes			
Interior		Exterior		Sizes	
Bedrooms	4	Garages	2	Floor Size	354m ²
Bathrooms	3	Carports / Parkings	6	Land Size	1,116m ²
Kitchens	2	Security	Yes		
Recep. Rooms	3	Pool	Yes		
Furnished	No	Views	False		

Extras

Air Conditioner Alarm System Built In Braai Built in Wardrobes Centre Island Closed Circuit TV Curtain Rails Dishwasher Connection Driveway Electric Garage Entrance Hall Extractor Fan Eye Level Oven Fibre Fireplace Garden Gas Hob Irrigation System Laundry Open Plan Outdoor Beams Oven & Hob Patio Scullery Special Doors Sprinkler System Totally Walled Wooden Floors

