



**Marlene Picksley**  
083 746 7860  
marlene.picksley@seeff.com

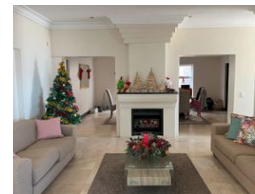
Contact Blouberg

021 5577755

Shop G01 Horizon Bay  
4 Blaauwberg Service Road  
Table View  
Cape Town  
7441



Web Ref RLS949784



### R9,500,000

🛏 7 🚿 5 🚗 5

**Monthly Bond Repayment** R98,057.90

Calculated over 20 years at 11% with no deposit.

**Transfer Costs** R925,676.00 **Bond Costs** R84,785.00

These calculations are only a guide. Please ask your conveyancer for exact calculations.

**Monthly Rates** R4,200

### CROWNED BY UNSURPASSED VIEWS - WEST BEACH

An Architecturally designed masterpiece boasts a three-story home with 7 bedrooms, 5 bathrooms, breathtaking panoramic views of the iconic mountain and the ocean which offers a serene and picturesque living experience.

A dramatic chandelier in the passage adds a touch of elegance and grandeur to your home. The property offers an incredible house size easily accommodating guests, welcoming a guesthouse experience or for the extended family. Designed for family living and entertaining at its best. A spacious guest suite with en-suite, a flatlet with separate entrance plus a 5 car garage.

The ground floor comprises a guest suite, with an ensuite bathroom. A wine cellar for showcasing your impressive collection. A separate flatlet convenience for guests or generating an income.

Upon entering the first floor is a gorgeous...

### Features

**Pets Allowed** Yes

#### Interior

Bedrooms	7
Bathrooms	5
Kitchens	2
Recep. Rooms	5
Studies	1
Furnished	No

#### Exterior

Garages	5
Carports / Parkings	7
Security	Yes
Pool	Yes
Views	True

#### Sizes

Floor Size	717m <sup>2</sup>
Land Size	814m <sup>2</sup>

